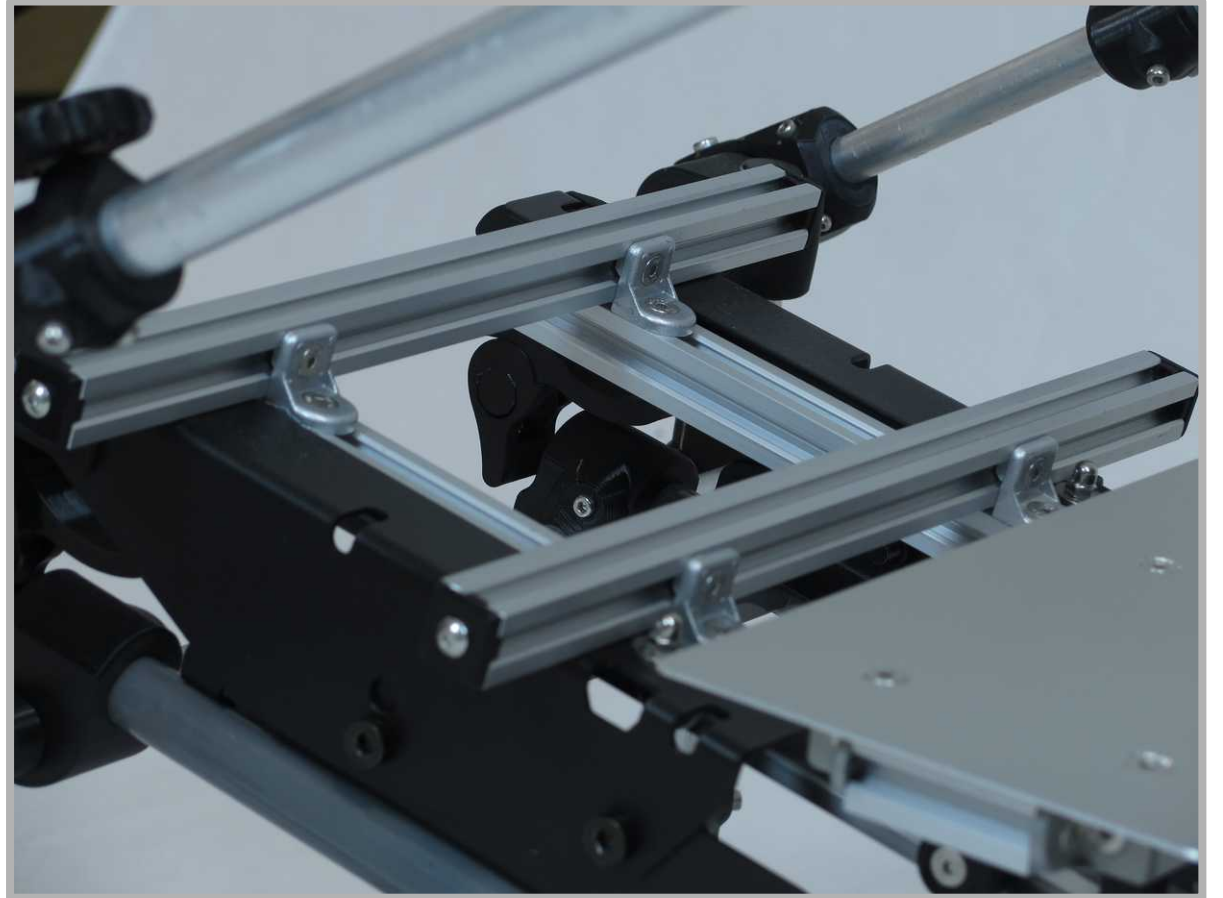


PLAYSEAT
CHALLENGE
LOCK-MOD X
PEDAL MOUNT



Assembly Manual

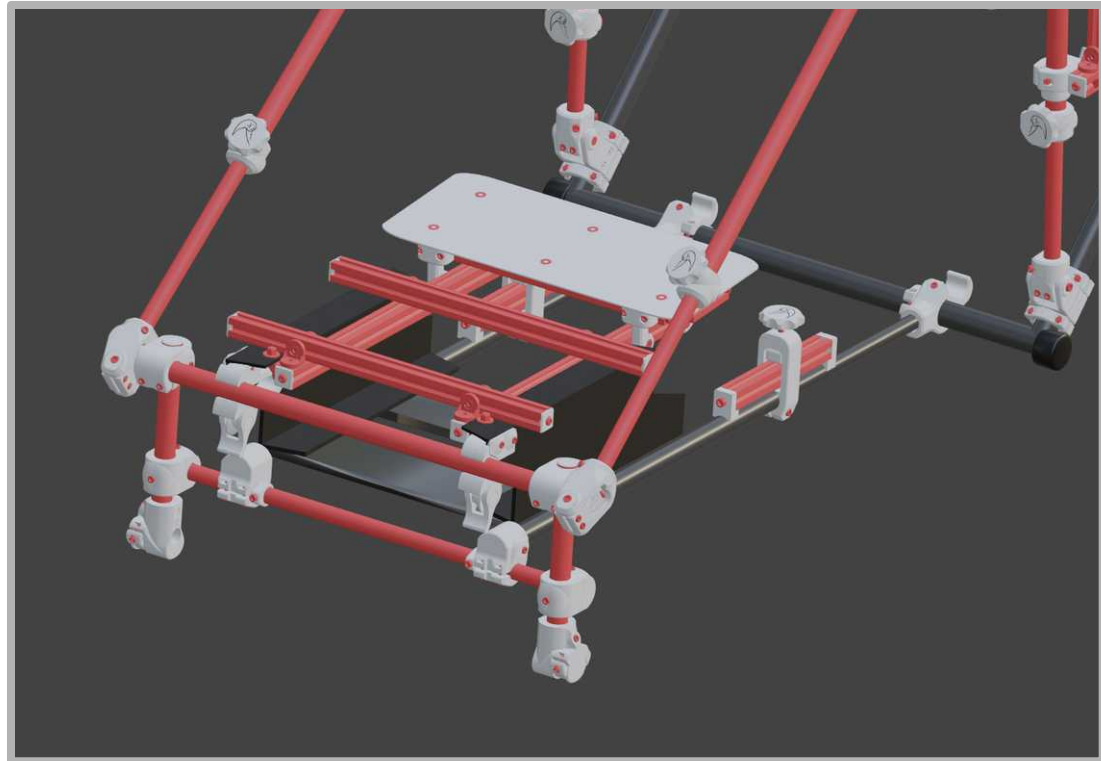
ABOUT

This is the assembly guide for the Lock-Mod X: Pedal Mount. The base unit is a rigid, versatile aluminium profile based system compatible with practically any so, pedal hardware. Can be configured with additional mounting hardware for particular pedal sets, and a heel rest designed specially for the Playseat Challenge X.

For use with the Playseat Challenge X: Lock-Mod X kit, or as a standalone unit with just the Playseat Challenge X (also known as the Logitech edition).

Note:

This accessory is not compatible with the original Playseat Challenge (or actifit model). A pedal mount system compatible with these models can be found [here](#).



CONTENTS

Tools	4
Care Instructions & Warranty	5
Kit Contents	6
Assembly Instructions	
Pedal Configurations	7
Pedal Mount Assembly	10

TOOLS



To assemble the Lock-Mod X: Pedal Mount, all you need is an **M4 hex key** and an 8mm spanner (or a pair of pliers). An **M3 hex key** is also required if including the heel rest optional extra. For just the base pedal mount, all the parts are sturdy metal and so a torque wrench isn't required. It is, however, recommended to use a torque wrench for some of the optional extras; the heel rest and the pedal compatibility parts both include plastic parts. If purchasing the full Lock-Mod kit then a torque wrench is included with both hex keys. The torque values for these parts are included in the Lock-Mod X torque guide, which you can find [here](#).

If assembling your kit without a torque wrench, The guide can still be referenced to help contextualise which bolts need more/less tension. To reduce the chance of breaking parts with excessive force start with less tightening force than you feel is needed. This can be further tightened if needed after testing your rig.

CARE INSTRUCTIONS & WARRANTY

Care Instructions

- If your kit includes plastic part, storing the kit in temperatures above 53° C or 127 F should be avoided to avoid plastic parts from warping.

Warranty

This kit comes with a 2-year warranty from the date of purchase, and it covers any failures resulting from reasonable use. Reasonable in this case assumes:

- All instructions in the assembly manual are followed.
- Force applied to the pedals is, at most, 80kg.

If these points are not adhered to the longevity of the Lock-Mod cannot be guaranteed.

If any problems are encountered with the kit, use the contact found here:

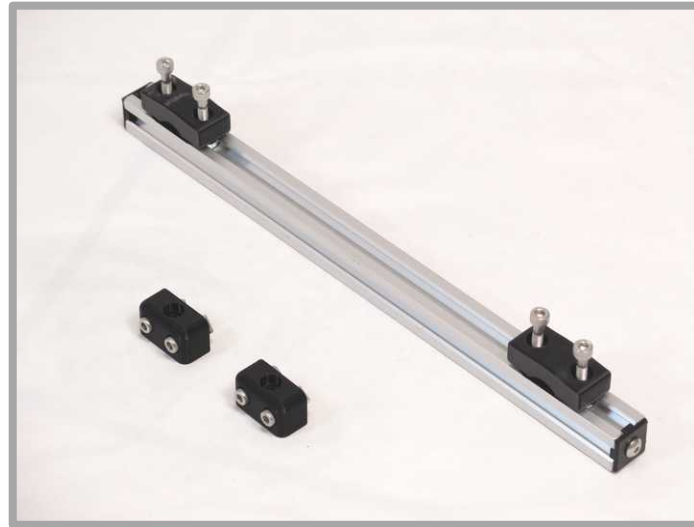
<https://psyskip.com/about/>

KIT CONTENTS

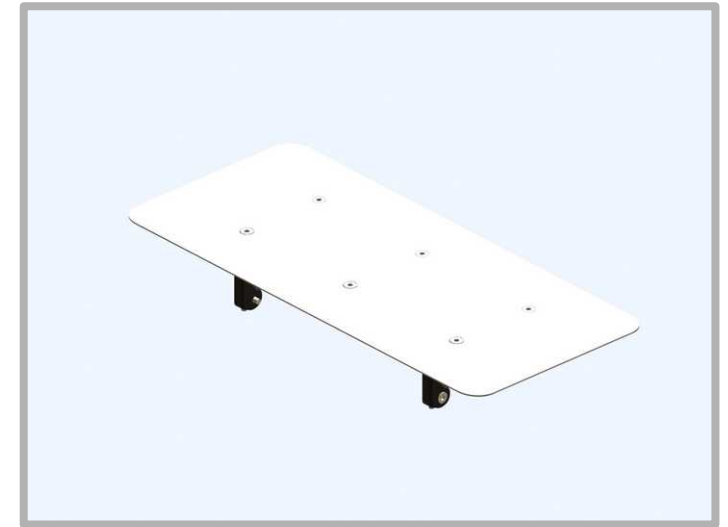
The Lock-Mod: Pedal Mount kit includes the 'base' content that allows attaches the 2020 aluminium profile to the Playseat Challenge, with additional hardware added depending on configuration options.



1. Base aluminium 2020 profile that mounts to the PSC X pedal tray..



2 (Optional). Additional mounting hardware to suit a variety of pedal variations



3 (Optional). Heel rest for use with pedals that don't include one.

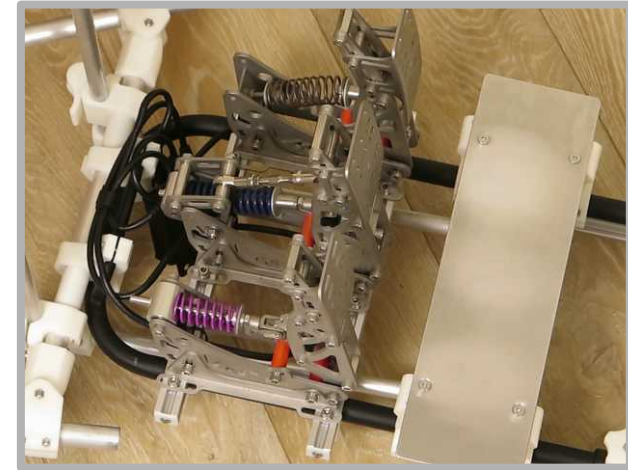
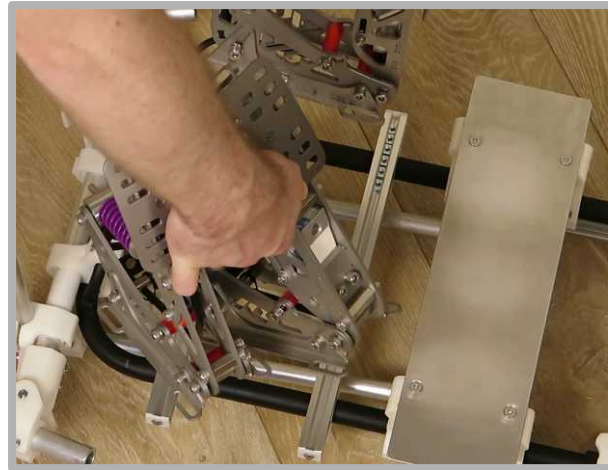
PEDAL CONFIGURATIONS

The order of assembly for the Pedal Mount can vary depending on the pedals. If your pedals come as one complete unit (Thrustmaster, Logitech, etc) then it's best to attach your pedals to the aluminium profile first. Generally most pedals of this type are bolted in from the bottom, which can be difficult if the aluminium profile is already mounted to the PSC X pedal tray.



For individual pedal modules (VRS, Heusinkveld, etc) it's easier to attach the aluminium profile to the PSC pedal tray first as a base to build your pedal layout on top of. These units are also generally bolted from the top, making access a bit easier.

Note: Original PSC: Lock-Mod shown in picture to illustrate pedal mount assembly, which applies to both kits.



Top Mount Hardware

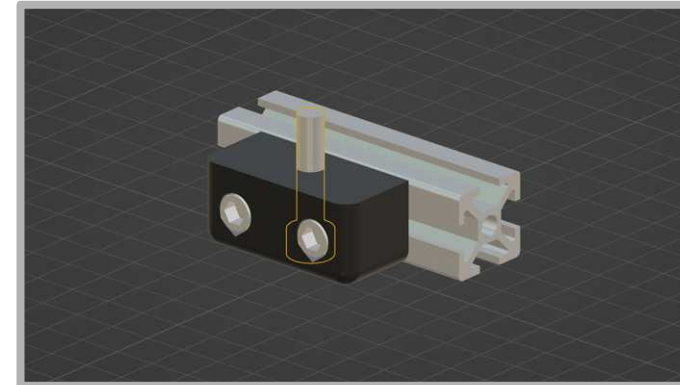
Pedal sets that don't have threaded inserts are usually designed for aluminium profile mounts, and are secured with M6 bolts with a matching T-nut. The optional mounting bolts included with the pedal mount come in a variety of lengths and a set of 3 washers per bolt to allow the length to be dialled in as needed. The formula to work out the required bolt length is:

Pedal base thickness (distance between top of pedal mounting hole to topside of aluminium profile mount) + *washer stack* (between 1-3mm) + *T-nut thread* (between 3-5mm) = *bolt length*

The *washer stack* and *T-nut thread* values can be adjusted to fit one of the M6 bolt length options in the configuration menu.

Bottom Mount Hardware

For pedal sets with threaded inserts that require bolts to be threaded up into the base from the bottom, the optional right angle bracket can be used. This removes the need for drilling and makes installation and adjustment of the pedals much easier.

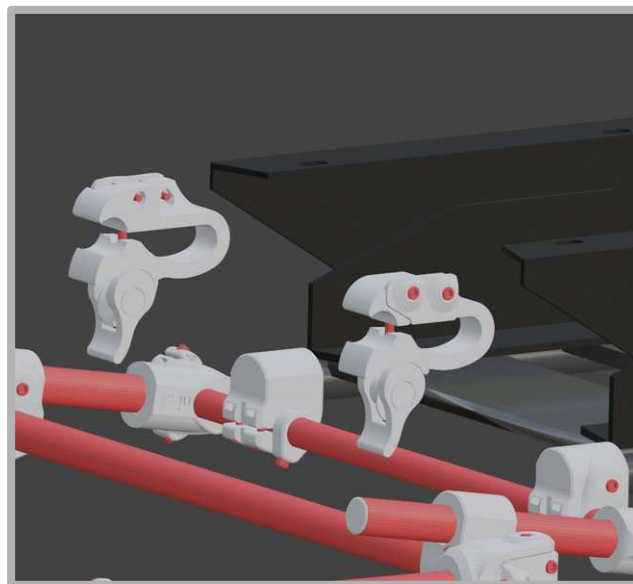
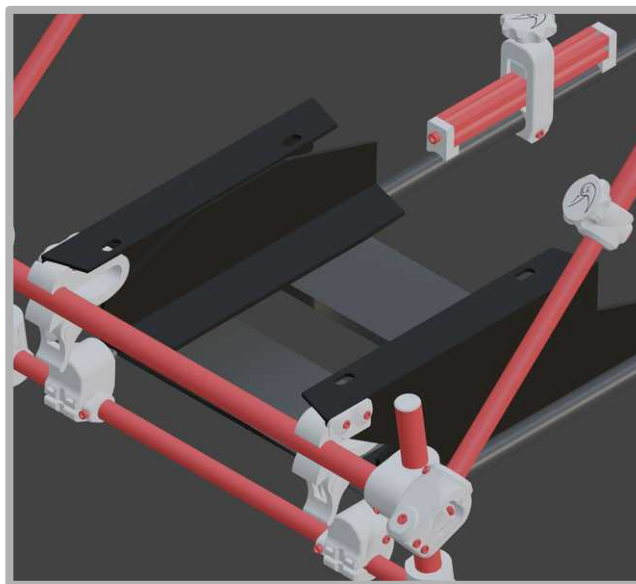


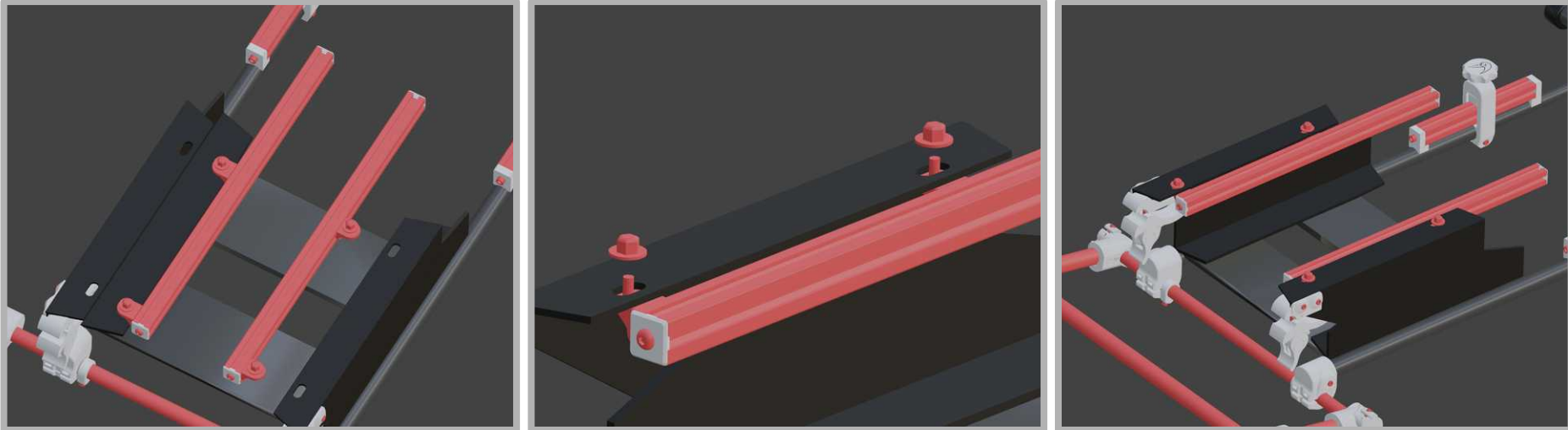
For some pedals a combination of these mounts is required. See the next page for a breakdown of pedal set compatibility.

Selection	Mounting Hardware Contents	Pedal Compatibility
None	<ul style="list-style-type: none"> - Base unit 	Dependent on user hardware
4 x M6	<ul style="list-style-type: none"> - Base unit - 4 x M6 socket head bolts of specified length - Matching T-Nuts and washers 	Pedal sets that comprise of a single unit (rather than individual pedal modules) that uses 4 x M6 bolts screwed down into the pedal mount.
4 x M6	<ul style="list-style-type: none"> - Base unit - 12 x M6 socket head bolts of specified length - Matching T-Nuts and washers 	Pedal sets that comprise of individual modules with no unifying base that can use 12 x M6 bolts (4 per module) screwed into the pedal mount.
Fanatec CSL	<ul style="list-style-type: none"> - Base unit - 2 x bottom mount adapters - 2 x 40mm M6 socket head bolts (25mm effective length) - 2 x 8mm M6 socket head bolts - Matching T-Nuts and washers 	<ul style="list-style-type: none"> - CSL Pedals - CSL Pedals LC
Thrustmaster T3PM	<ul style="list-style-type: none"> - Base unit - 5 x bottom mount adapters - 5 x 30mm M6 socket head bolts (15mm effective length) - Matching T-Nuts and washers 	<ul style="list-style-type: none"> - Thrustmaster T3PM - Thrustmaster T-LCM (middle attachment bolt not used)
Thrustmaster T-LCM	<ul style="list-style-type: none"> - Base unit - Additional aluminium profile (for middle bolt attachment) - 5 x bottom mount adapters - 5 x 30mm M6 socket head bolts (15mm effective length) - Matching T-Nuts and washers 	<ul style="list-style-type: none"> - Thrustmaster T-LCM
Moza SRP Lite	<ul style="list-style-type: none"> - Base unit - 2 x bottom mount adapters - 2 x 30mm M6 socket head bolts (15mm effective length) - 2 x 8mm M6 socket head bolts - Matching T-Nuts and washers 	<ul style="list-style-type: none"> - Moza SRP Lite
Logitech Pedals	<ul style="list-style-type: none"> - Base unit - 6 x bottom mount adapters - 6 x 25mm M6 socket head bolts (9mm effective length) - Matching T-Nuts and washers 	<ul style="list-style-type: none"> - Logitech Pro Racing Pedals - Logitech G29 Pedals - Logitech G920 Pedals - Logitech G923 Pedals

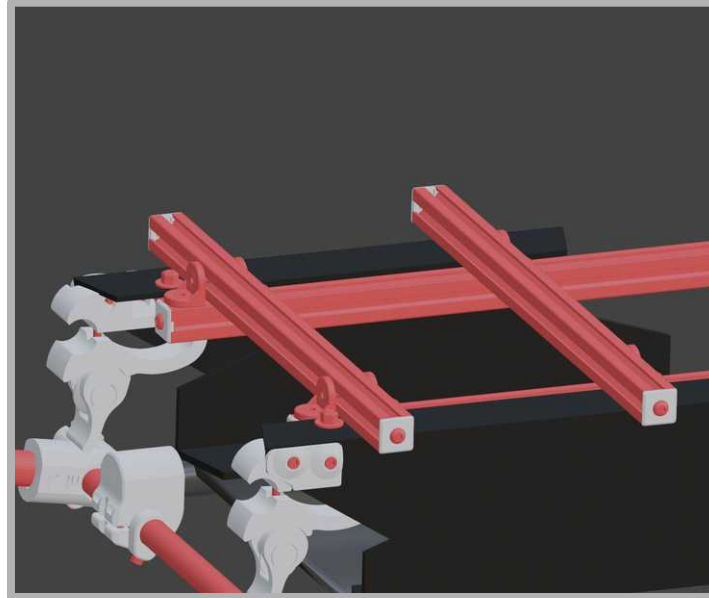
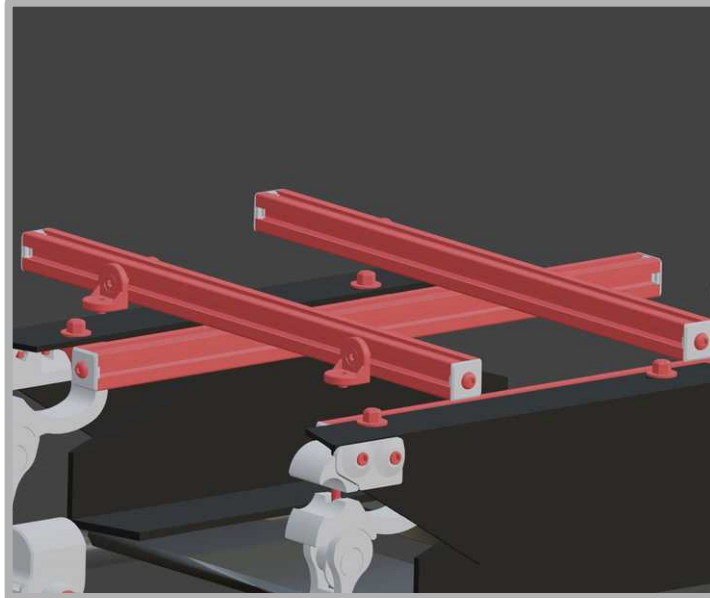
PEDAL MOUNT ASSEMBLY

If attaching the pedal mount in conjunction with the full Lock-Mod X upgrade kit, attaching the pedal mount first will make things a bit easier. If the Lock-Mod X upgrades are already in place, all that needs to be done is to temporarily remove the **Pedal Tray QR Interface** parts.





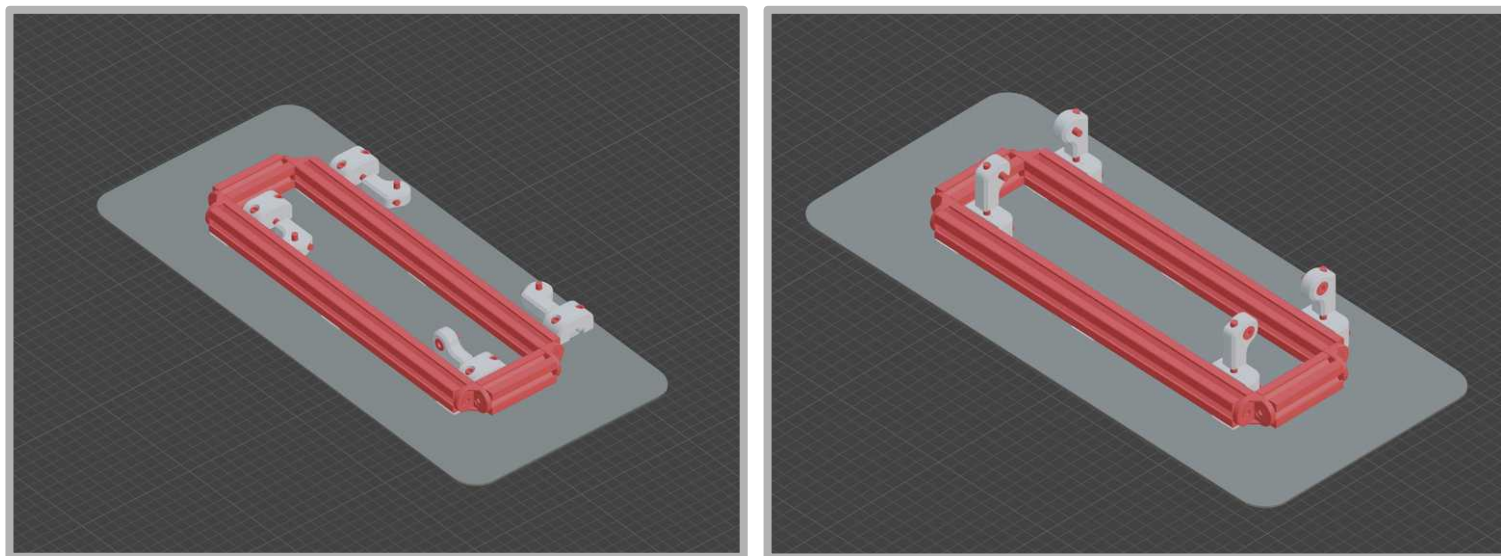
The 2 aluminium profiles shown (the ones with capped hex nuts) will be attached to the underside of the PSC X pedal tray. Unscrew the hex capped hex nuts and position the pieces so they line up with the bolt holes, then tighten in place. You may need to reposition the brackets to match the hole position of the PSC X pedal tray.



The 2 remaining aluminium profiles can now be attached to the bottom profiles. The top profile will need to be positioned behind or in front of the capped hex nuts and washer so that they are clamped flush against the PSC X pedal tray. It is recommended to mount it behind the capped hex nut and washer, as this will place the pedals further back; doing this will increase the pedal's clearance in relation to the seat fabric, which can interfere when folding the rig.

If your chosen pedal set hasn't been mounted, they can now be attached to the profile. Final positioning can be done later, but bolts should still be securely tightened to ensure nothing slips when folding.

HEEL REST ASSEMBLY

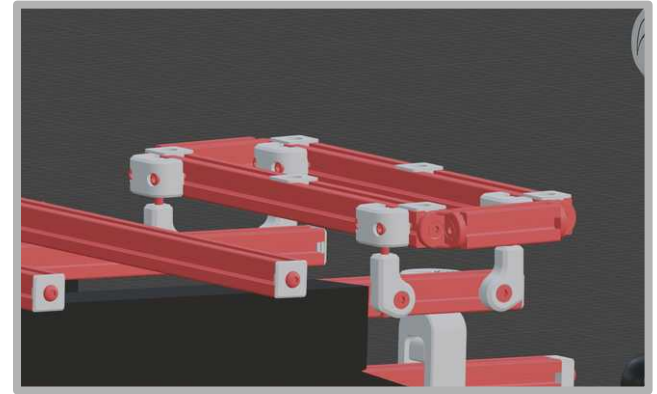
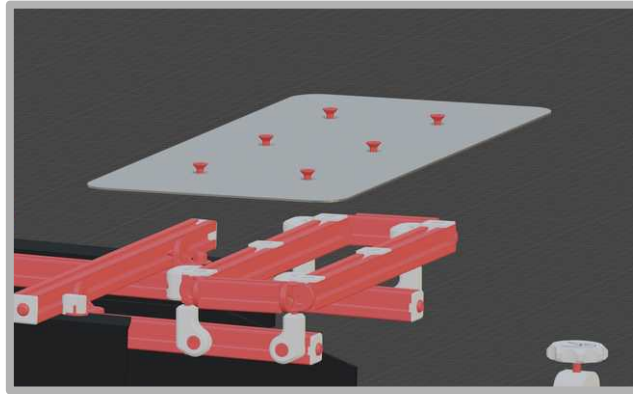
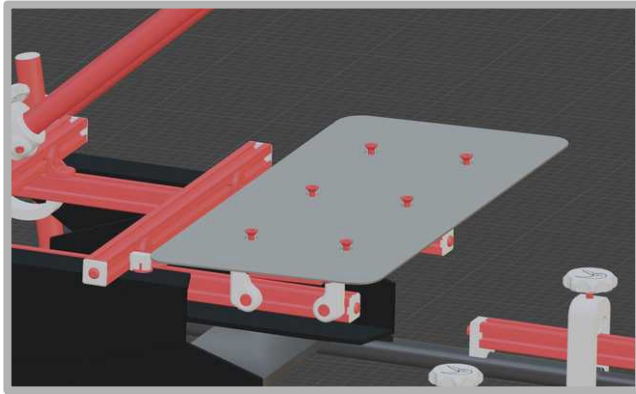


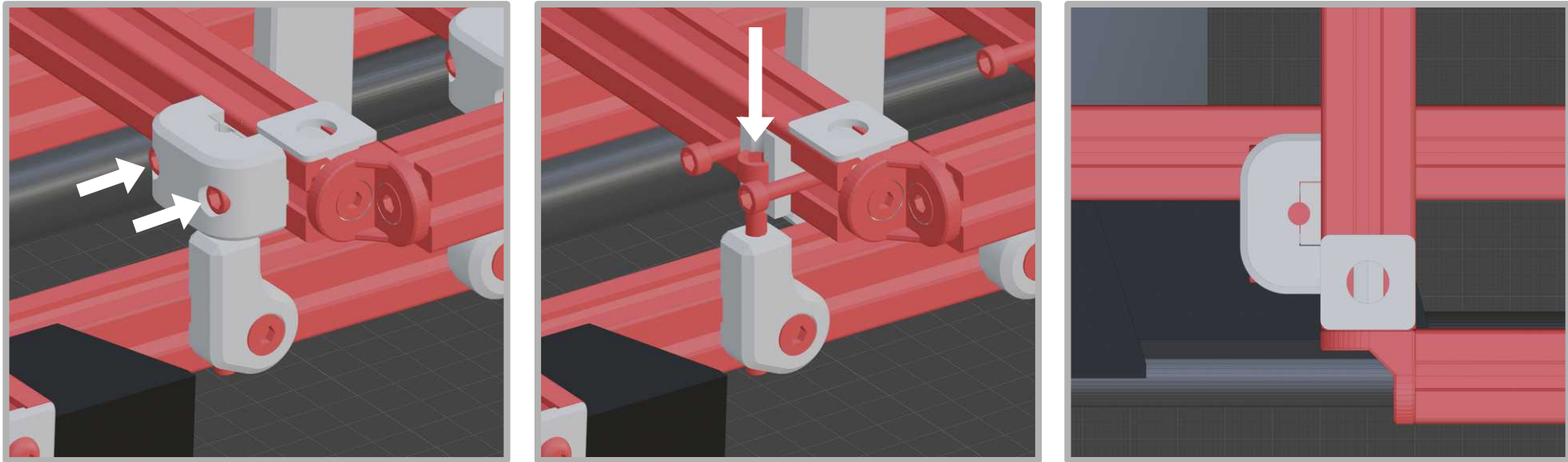
Attach the height adjustable connectors to the aluminium profile of the heel rest, as shown. Leave the bolts somewhat loose to allow side-to-side movement.



To attach the heel rest to the pedal mount rails, remove the end caps and slide the connectors into the outside rails of the profile. Once inserted, leave the bolts loose for now and re-attach the profile end caps.

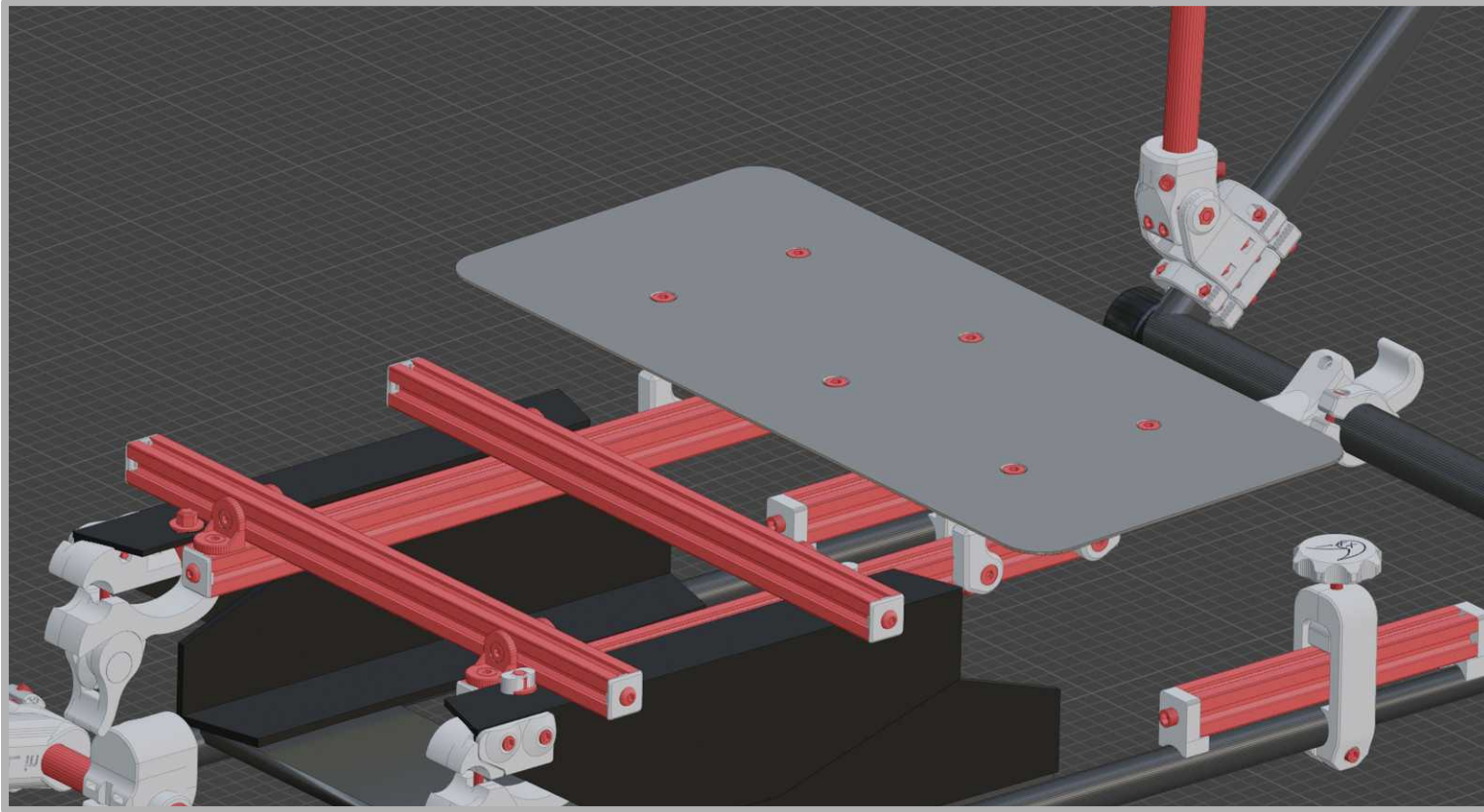
To adjust the height and angle of the heel rest, remove the heel rest plate and set aside.





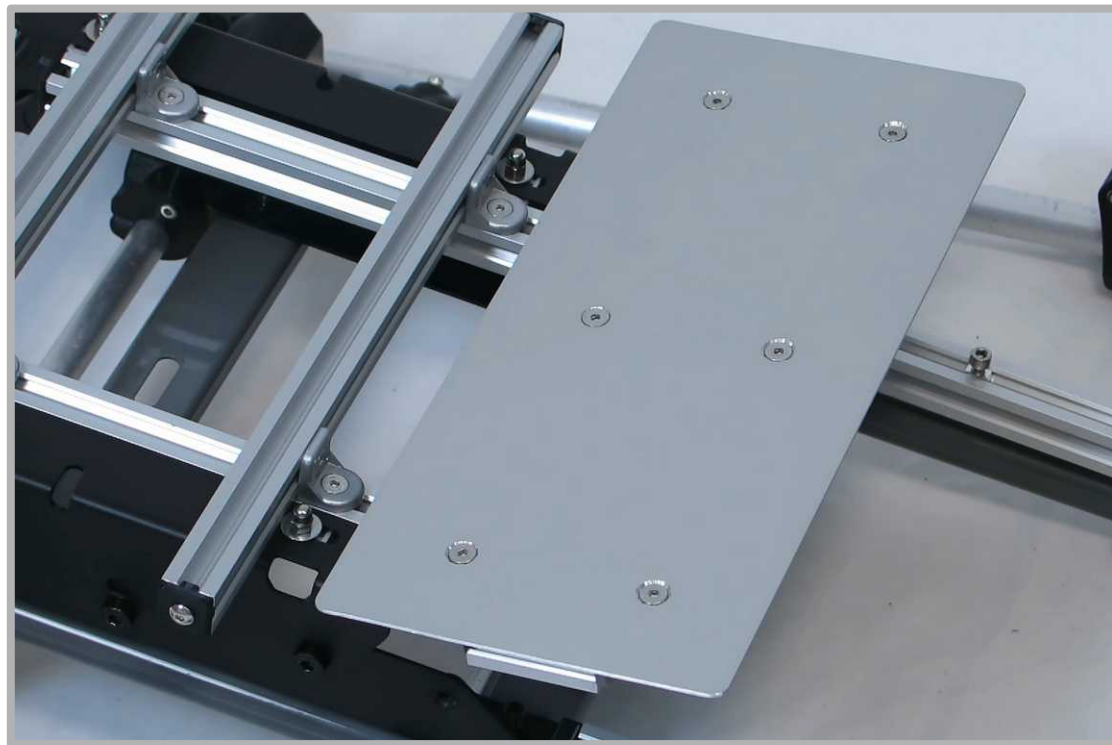
The height of the heel rest is adjusted rotating the screwing/unscrewing the connecting bolt, accessed through the top once the plate is removed. The two small clamping bolts need to be left loose to allow the connecting bolt to be adjusted.

Clockwise rotation lowers the heel rest, anti-clockwise raises the heel rest. When adjusting the the height, take care to match the left and right side heights Having different heights for the front and back bolts give the heel plate an angle, which can be used to counter the tilt of the pedal tray.



With the approximate position set, attach all sim-racing peripherals and any remaining Lock-Mod parts to your PSC X. When setting the driving position, loosely attach the heel rest plate to verify it's position, then remove to make any necessary adjustments to the angle/height.

Tighten all bolts to spec once the position of the heel plate is finalised.



For further instructions on cable routing of the pedals and other setup information for your Playseat Challenge X: Lock-Mod X rig, refer to the full Lock-Mod X assembly manual found [here](#).

Happy racing~